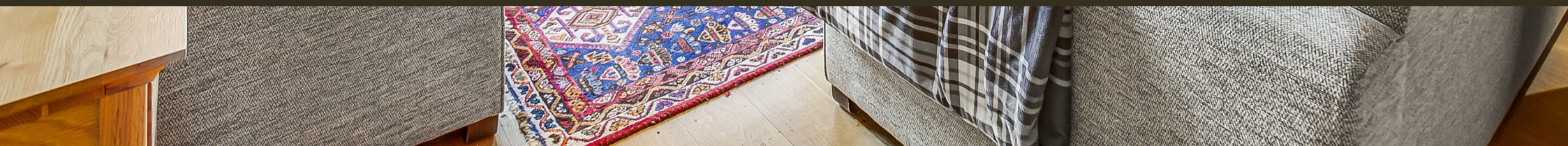




8 Dean Ryle Street, Westminster
London SW1P

GARTONJONES.COM



8 Dean Ryle Street, Westminster
London, SW1P

GARTON JONES.COM

49 Marsham Street Lettings:
London +44 (0) 20 7340 0480
SW1P 3DP westminster@gartonjones.com
www.gartonjones.com

£1,050 Per Week

An extremely bright and spacious 2 bedroom apartment available to let within this very sought after development close to the banks of the River Thames. The property is offered furnished and the accommodation measures at a generous size of 1325 Sq.ft (123 Sq.m) with accommodation comprising of a separate modern kitchen, a superb dining and reception room with marvellous views onto the picturesque St Johns Gardens. There are two well apportioned bedrooms both offering en-suite bathrooms and a walk in wardrobe to the master. Further benefits include a balcony, a guest WC, ample fitted storage and high ceilings throughout. Residents of Westminster Green benefit from a 24 hour concierge, lavish lobby area, business suite and a gymnasium. You will be within walking distance to the amenities of Horseferry Road and Victoria Street which include many shops, a Curzon Cinema and a host of other restaurants. The development is also located next door to the international headquarters of Burberry and the Westminster Hotel. The transport links of St James's Park, Westminster and Victoria are all within walking distance.

**Please note that the furniture may differ to that shown in the current photos

Council Tax Band G (London Borough of Westminster)
Minimum Term 12 Months
Deposit 6 Weeks
EPC Rating: C (78)

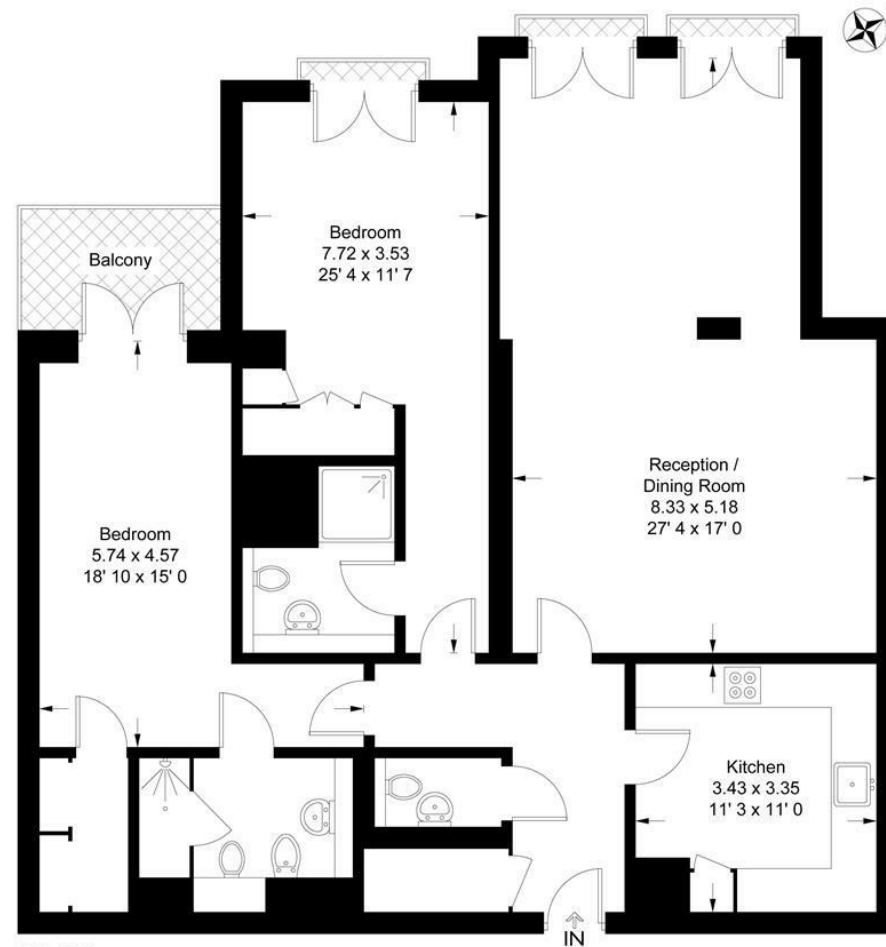
- Generously Sized 2 Bedroom Apartment
- 1325 Sq.ft (123.1 Sq.m)
- Reception Room
- Separate Integrated Kitchen
- 2 En-Suite Bathrooms & Guest WC
- Available: 26/08/2025
- Balcony & Stunning Views of St Johns Gardens
- 24 Hour Porter & Resident's Gymnasium
- Close to Local Amenities Including Shops and Restaurants
- Walking Distance to St James' Park & Westminster Tube Links



Westminster Green

Approximate Gross Internal Area = 1325 sq ft / 123.1 sq m

GARTON JONES
LONDON



Third Floor

This plan is not to scale and must be used as layout guidance only. All measurements and areas are approximate and should not be relied upon to provide accurate information. This plan must not be relied upon when making property valuations, design considerations or any other such relevant decisions. We accept no responsibility or liability (whether in contract, tort or otherwise) in relation to any loss whatsoever arising from or in connection with any use of this plan or the adequacy, accuracy or completeness of it or any information within it.



